

## WELCOME TO WESTORIA

We are a private mineral resources investment group that sources, evaluates and funds early stage resource projects.

Our clients include explorers, miners, financiers, our shareholders and co-investors. Westoria has offices in Melbourne and Perth, Australia.

**“Our vision is to deliver superior absolute returns to shareholders through active investment in emerging opportunities that have the genuine potential to be world-class mining projects.”**

## STRATEGY

Westoria Resource Investments is the investment vehicle focused on “sweet spots” of resource project life cycles such as emerging discovery (low cost entry) and emerging production, as well as special situations (e.g. distressed sale or capital raising) that will lead to a re-rating of the asset and release of value.

The key drivers underpinning the investment strategy include:

- **Super cycle of demand for mineral resources** due to industrialisation and urbanisation of the Brazilian, Russian, Indian and Chinese (BRIC) economies;
- **Need for further substantial supply of resources** to be found to meet strong increase in demand and replace mines coming to the end of their operational life;
- **Under investment in early stage exploration and development** relative to need for further supply; and
- **Ongoing industry consolidation** and levels of corporate activity resulting in the release of non-core exploration and development projects from acquired entities.

### CONTENTS

#### PAGE 1

- WELCOME TO WESTORIA
- OUR VISION
- STRATEGY

#### PAGE 2

- COMPANY STRUCTURE
- MANAGEMENT TEAM
- KEY POINTS OF DIFFERENCE
- CONTACT US



MANAGEMENT  
TEAM

RICHARD HILL  
BRENDAN CUMMINS  
ADRIAN HILL

**COMPANY STRUCTURE**

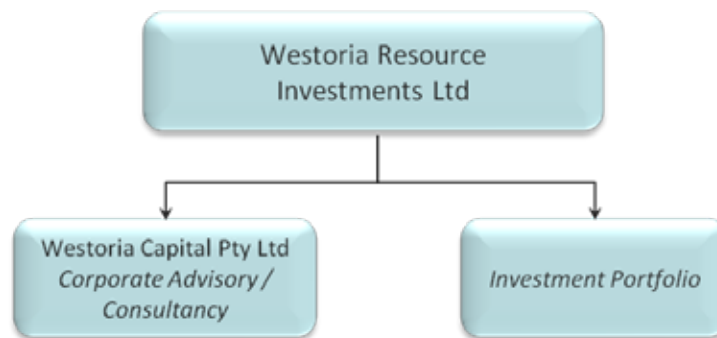
Westoria Resource Investments provides a genuine opportunity for investors to gain exposure to the global commodity markets through well researched, strategic investments.

Westoria Capital provides corporate advisory; management and consultancy services to the resources sector with an emphasis on junior mining companies.

**MANAGEMENT TEAM**

The Westoria Management Team are like-minded successful executives with a strong background in the resource and finance sectors.

The team has a proven track record of identifying and developing early stage opportunities, building these opportunities into successful projects/businesses and then exiting to provide significant returns on investment.



CONTACT US:

MELBOURNE OFFICE  
Level 1, 415 Riversdale Rd  
Hawthorn East, VIC 3123  
P 03 9813 3882  
F 03 9813 4882

PERTH OFFICE  
35 Richardson Street  
West Perth, WA 6005  
P 08 9321 2200  
F 08 9321 2202

E [info@westoria.com.au](mailto:info@westoria.com.au)  
W [westoria.com.au](http://westoria.com.au)

**KEY POINTS OF DIFFERENCE**

**Activist, Nimble Investment Approach**

The Management Team are active in sourcing opportunities and are engaged to de-risk, monitor and upgrade the value of Westoria's investments to a point where it can carefully manage its exit to realise value.

**Access to Deal Flow and Co-Investors**

The Management Team's worldwide networks and physical presence on both the western and eastern seaboard of Australia provide ongoing exposure to a range of early stage or foundation level investments traditionally only available to investors directly involved in the industry.



**The Management Team is fully aligned with Shareholders**

The Management Team are significant shareholders and are remunerated based on the performance of Westoria.